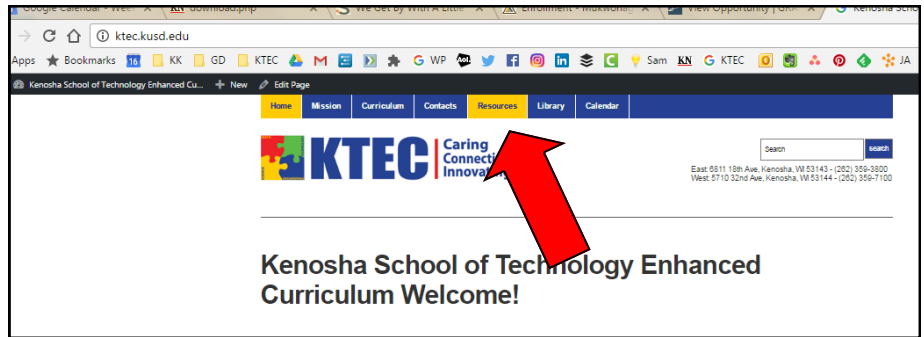


# How to access "Evolving Creatures" from any computer.

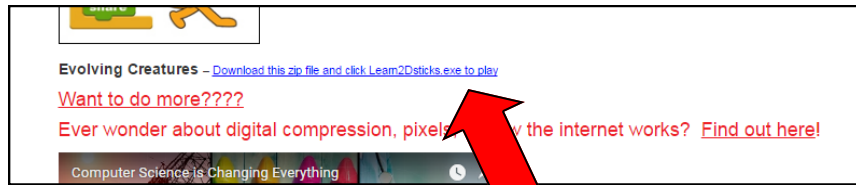
Go to the KTEC website (ktec.kusd.edu)

Click on the Resource Tab



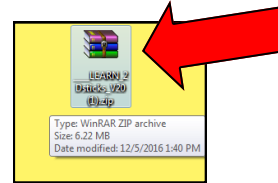
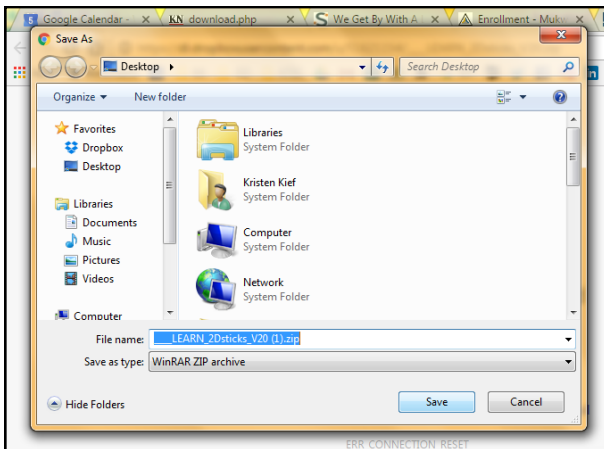
Scroll down until you see "Evolving Creatures—Download this zip file and click Learn2Dsticks.exe to play"

Click on the link

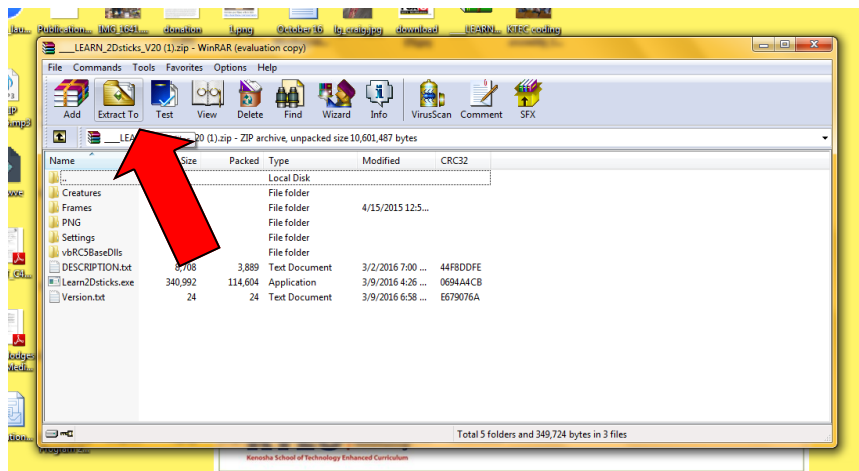


It will prompt you to save the zip file. Save file.

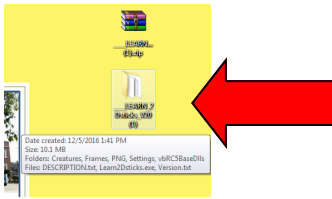
Double click on the saved zip file to open it.



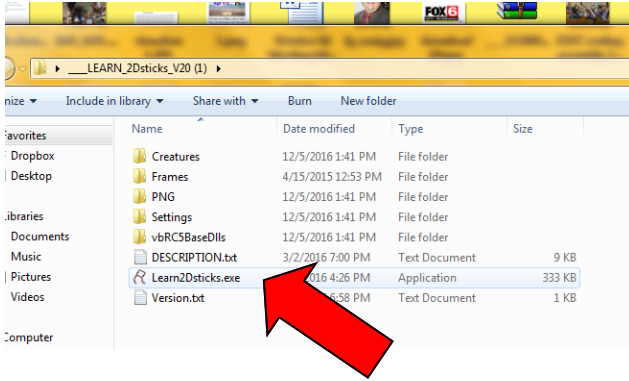
You must now extract all the zipped files. This process will be different on different computers, but you should be able to see something that says "Extract." (Below is what it looks like on my computer.) Click on that.



Click on the folder that now contains the extracted files.



Click on the file that says, "Learn2Dsticks.exe"



This will open the program.

Click "Load/Edit Creature" to start.

Once you have your creature created, Click "Start TRAIN" to start evolving your creature.

